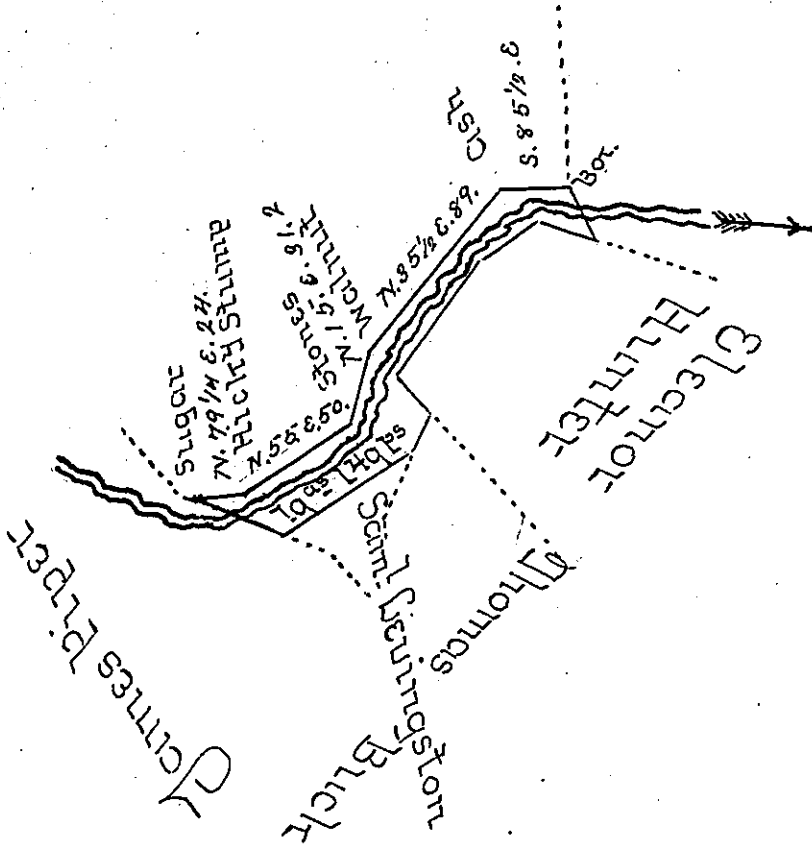


Courses and distances
up Yellow Creek from the
Blackoak to the Sugar

- S. 35. E. 17. Post
- N. 74. W 27. Post
- S. 53. W. 27. Cist
- S. 36. W 65. Cist
- S. 46. E. 22. Post
- S. 21. W. 16. Stones
- S. 55. W. 67. Maple
- N. 74. W 38 Sugar



Situated in Hopewell Township Bedford County on both sides of Yellow Creek, containing 19 acres 149 perches and the Allowance for Roads &c Surveyed the 21st day of October 1806 in pursuance of a Warrant granted to Thomas Buck dated September the 25th 1806 -

By Samuel Cochran Esquire } William Piper U.S.
Surveyor General - }

NB this Survey is Disputed by Samuel Sewingstone of the Township and County aforesaid by an improvement part of which is included in the same -

Wm Piper U.S.

IN TESTIMONY that the above is a copy of the original remaining on file in the Department of Internal Affairs of Pennsylvania, made conformably to an Act of Assembly approved the 16th day of February, 1833, I have hereunto set my Hand and caused the Seal of said Department to be affixed at Harrisburg, this 21st day of January 1907.

James O. Brown
Secretary of Internal Affairs.